

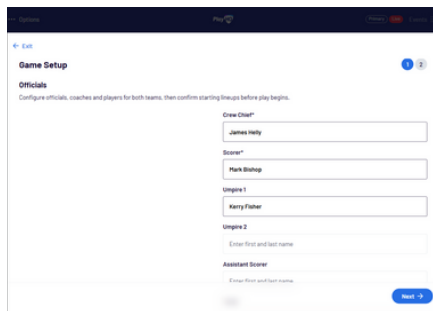
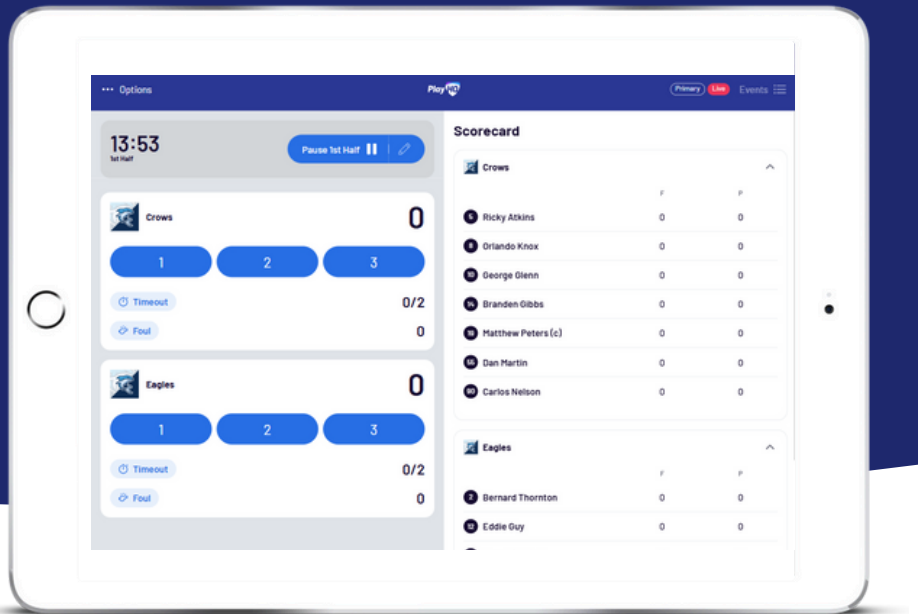


Basketball Electronic Scoring Guide

FOR ADMINS

FOR SCORERS

SEPTEMBER 2025

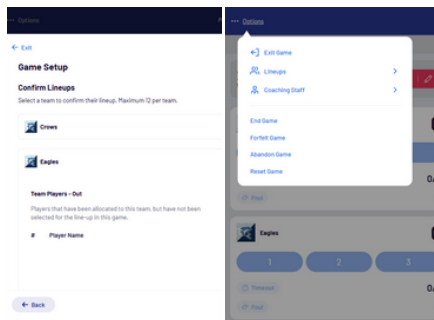


Add Officials

Capture each Official at the start of the game.

They will be required to digitally sign-off results at the end of the game.

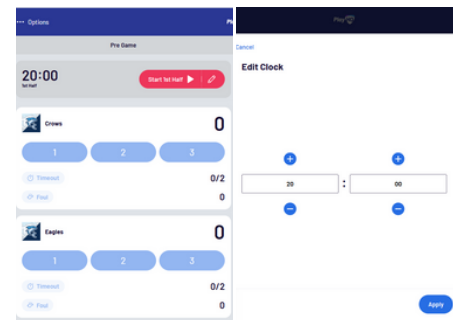
Officials will be listed in the Admin Portal post-game.



Managing coaches and lineup

Select each time name to show the lineup editor. Click **+** or **-** to move players in and out of the lineup.

To add a fill-in, click **ADD FILL-IN** and provide required player information. Select each team's coaches from the Options - Coaching Staff menu item.

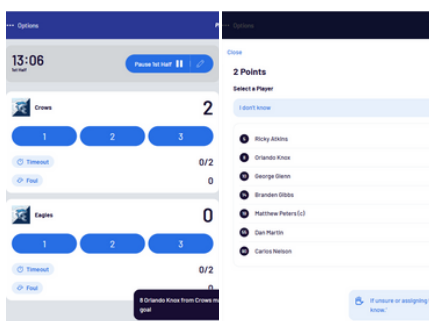


Editing clock and starting periods

Click **START** to kick-off the next period. The clock will automatically begin counting down. The current period will show next to the clock.

Edit the clock by clicking the **edit** icon.

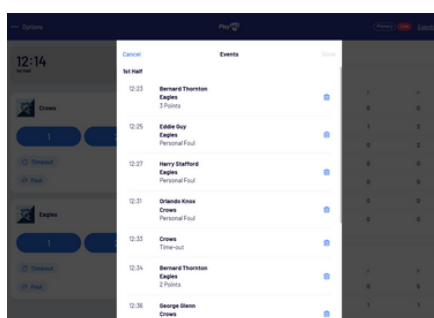
When the clock has run down, confirm to end the period.



Adding scores and fouls

Scores or fouls can be added by clicking on the score type, then select the player to attribute the score to or click 'I don't know' to assign against the team.

When assigning a foul, select this option then choose from the available foul types to assign to a player, coach or team.

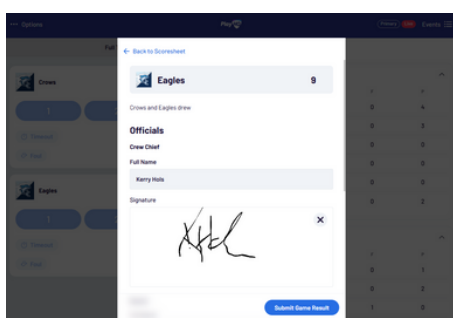


Undo and event log

Click on **EVENT LOG** to view a full history of the games events.

Click on **undo** to remove any score or foul, then select Done to save your changes.

An option to **UNDO** an event will appear for a few seconds, to quickly undo the last score or foul made.



Finalising a game

End the last period, or open the Options menu at any stage, and select **END GAME** to finalise.

Forfeits and abandonments can be selected from the menu also.

Please note that a referee will be required to sign off to finalise a game.